

TAN.WAVE

PORTABLE EXTRACTION UNIT



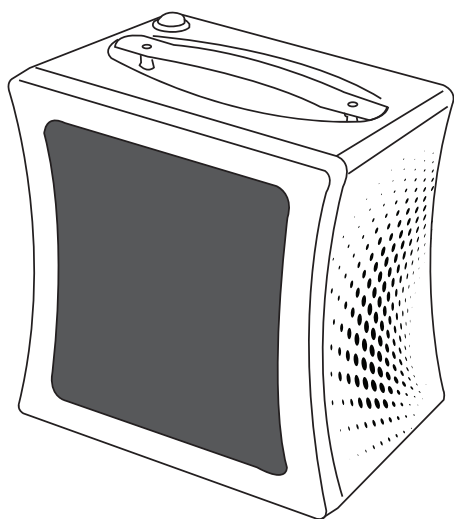
PRODUCT DATA & **USER GUIDE**

mine[®]
TAN.BODY.SKIN

TAN.WAVE PORTABLE EXTRACTION UNIT

COMPONENTS LIST

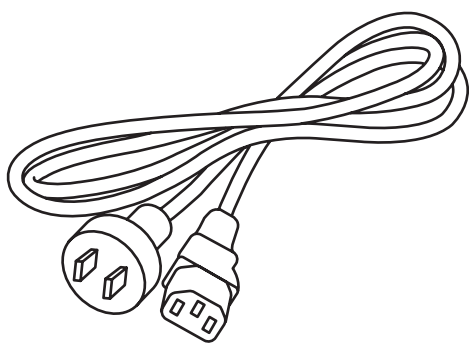
QTY	PARTS
1	Tan.Wave Portable Extraction Unit
1	Tan.Wave Filters
1	Power Cord



1 x Tan.wave Portable Extraction Unit



1 x Tan.Wave Filters

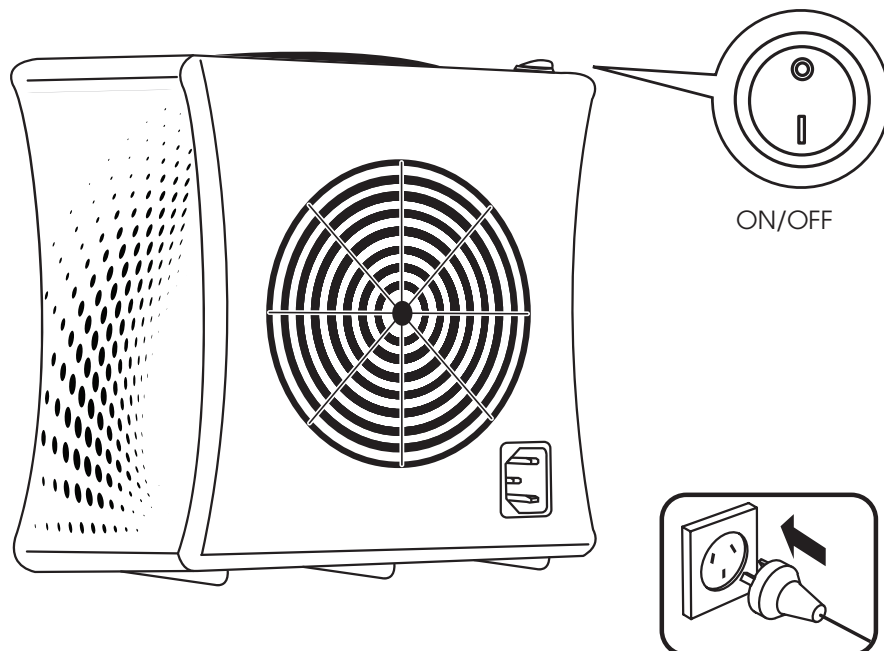


1 x Power Cord

TAN.WAVE PORTABLE EXTRACTION UNIT

OPERATION MANUAL

POWER ON : EXTRACTION & CLEAN AIR

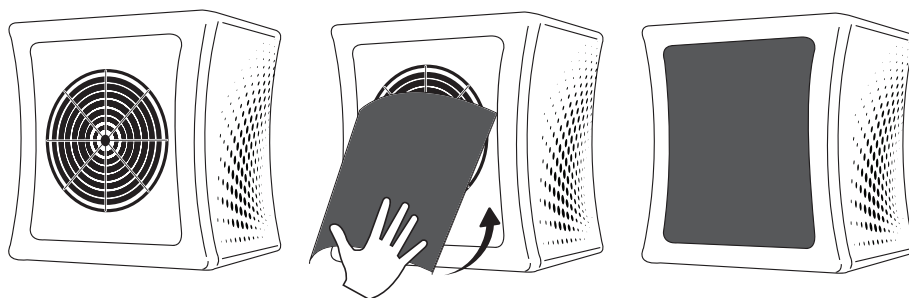


Turn the device 'on' by pressing the red on switch located on the Tan.Wave Air Unit.

By Turning the unit on, the Micro-Whirlwind extraction fan will help remove overspray in the air of any room when spray tanning.

The Tan.Wave Air Series of clean air extraction systems works by extracting the moisture (and any troublesome tanning solution) from the air before it travels throughout the room.

CLEANING & MAINTENANCE : REPLACING THE TAN.WAVE FILTER



IMPORTANT! Do not turn the filters back to front to try and re-use the other side. They will only work based on one air flow direction. It is important to check your filter and replace according to instructions, to maintain performance. Do not put the filter in a dishwasher, washing machine, tumble dryer, oven, microwave or near a naked flame. Dispose of filter once used.

The Tan.Wave Air filter captures any fine mist and reduces mess to ensure the environment is comfortable for both clients & the user.

1. Switch off power supply to ensure the Tan.Fresh Air Unit is not in operation.
2. Peel back the filter from one corner of the Tan.Wave Air Unit (We recommend using gloves to keep hands clean)
3. Dispose of the old filter.
4. Using your hands carefully slide new filter into the lip created by the frame and evenly work the filter into position using your hands.

TAN.WAVE AIR UNIT

If the Tan.Wave air unit gets dirty with overspray solution, wipe down with tan.easy cleaning wipes. alternatively you can use a smooth cloth (avoid anything abrasive) with a general household glass cleaner to maintain its clean finish.

Warning: Always Unplug The Device Before Cleaning. Replace Each Tan.fresh Air Filter After 100 Spray Tans (Full Body Application) Or After 5 Litres (169 Floz) Of Product.



TAN.WAVE PORTABLE EXTRACTION UNIT

⚠ WARNING & SAFETY

IMPORTANT SAFETY PRECAUTIONS

Before using the Tan.Wave, read all instructions and cautionary markings in this manual and on the device. When using an electrical appliance, basic precautions should always be followed, including the following:

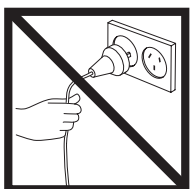
WARNING

TO REDUCE THE RISK OF FIRE, ELECTRIC SHOCK, OR INJURY:

1. Do not leave product unattended when plugged in. Unplug from outlet when not in use and before servicing.
2. Do not use outdoors or on wet surfaces.
3. Do not allow to be used as a toy. Close attention is necessary when used by or near children.
3. This product is not intended for use by persons (including children) with reduced physical, sensory or mental capabilities, or lack of experience and knowledge, unless they have been given supervision or instruction concerning use of the appliance by a person responsible for their safety.
4. Use this device only for its intended function and do not use attachments not recommended by the authorized MineTan manufacturer.
5. Do not use the device if the cord is damaged. In the event of damage discontinue use immediately. If the supply cord is damaged, it must be replaced by the authorized MineTan manufacturer.
6. If device is not working as it should, has been dropped, damaged, left outdoors, or dropped into water, do not use, contact MineTan Customer Care via the website or regional telephone number.
7. Do not pull or carry by cable, use cable as a handle, close a door on cable, or pull cable around sharp edges or corners. Keep cable away from heated surfaces.
8. Do not unplug by pulling on cable. To unplug, grasp the plug, not the cable.
9. Do not handle plug with wet hands.
10. Do not put any object into openings. Do not use with any opening blocked; keep free of dust, lint, hair, and anything that may reduce air flow. Switch off and unplug the product before attempting to remove any blockage.
11. Turn off all controls before unplugging.
12. Do not spray flammable or combustible liquids, such as gasoline, or use in areas where they may be present.
13. Do not use without the filter in place.
14. Never look directly into the airflow when device is in use.
15. Do not use an extension cord unless the cord complies with local regional electrical safety standards
16. Periodically inspect the power cord for signs of damage

SAVE THESE INSTRUCTIONS

This product is intended for professional use only.



Do not pull
on cable



Do not submerge in
water or get wet



Do not use near
open flames

FOR MORE INFORMATION



VISIT OUR WEBSITE FOR MORE INFORMATION
WWW.MINETANBODYSKIN.COM

TAN.WAVE PORTABLE EXTRACTION UNIT

WARRANTY & GUARANTEE

MINETAN GUARANTEE

1 YEAR TROUBLE FREE WARRANTY

Congratulations on your purchase. We trust you will be happy with your purchase as the products are designed to give you many years of service. To activate your Guarantee, please complete the information within 30 days of purchase. This form has details of our guarantee terms & conditions so please read it carefully, fill it in and return it to the address at the back of this manual. Alternatively you can register online at minetanbodyskin.com. Keep this form, with your original proof of purchase for any claim under guarantee. If you have any queries or require further information on your product please contact your local representative of Minetan Pro Tools Products.

*TO REGISTER YOUR EQUIPMENT OR LODGE A WARRANTY CLAIM PLEASE VISIT **MINETANBODYSKIN.COM/WARRANTY/***

TERMS & CONDITIONS

If within one (1) year from the date of purchase, the product fails due to a defect in material or workmanship, we will repair if possible or replace it free of charge with a comparable unit, which may be new or refurbished. This guarantee applies only to the original purchaser and is not transferable. The goods must be returned to the seller with proof of purchase to be assessed at the purchasers cost. Prior to making a claim, please ensure you have read all trouble-shooting questions at minetanbodyskin.com. If there is a defect with the device, it will be replaced free of charge with a comparable unit. Guarantee shall not apply to any defect, failure or damage caused by improper use or improper or inadequate maintenance and care. The manufacturer shall not be obligated under this guarantee:

1. To repair damage resulting from attempts by personnel other than authorized representatives to install, repair or service the product.
2. To repair damage, malfunction, or degradation of performance resulting from improper use or incompatible solution.
3. To perform maintenance or cleaning or to repair damage, malfunction, or degradation of performance resulting from failure to perform user maintenance and cleaning as prescribed.
4. To repair damage, malfunction, or degradation of performance resulting from use of the product in an environment not meeting the operating specifications.

mine[®]
TAN.BODY.SKIN

© 2020 MineTan. All rights reserved.

MarqLabs, 291 Edgewood Street, Alexandria, TN. 37012

Email: brands@marqgroup.com **Phone:** AUST: 1300 819 331 USA: 1800 914 3880 EU/UK: +31 (0) 2023 74700
minetanbodyskin.com